



SOUTHERN ILLINOIS UNIVERSITY
EDWARDSVILLE

Institute of Transportation Engineers, SIUE Student Chapter

2017-18 Annual Report

Southern Illinois University Edwardsville
Institute of Transportation Engineers
Edwardsville, IL 62026, <http://www.ce.siu.edu/ite>

ANNUAL REPORT OF STUDENT CHAPTER ACTIVITIES

From February 25, 2017 to February 28, 2018
ITE Southern Illinois University Edwardsville Student Chapter

Student Chapter Officers (2017-2018 Calendar Year)

President:	Mohiuddin Imran
Vice President:	Obaid Rahman
Secretary:	Pranesh Biswas
Treasurer:	Reza Salehi
Faculty Advisor:	Dr. Yan Qi

Student Chapter Membership

Number of Student Members: 48
Number of Student Members of ITE International: 10
Number of Students Eligible to be a Student Member of ITE: 199
Number of Faculty Members Who are Current ITE Members: 2

Information on Transportation Engineering Enrollment

Number of Undergraduate Students in Civil Engineering: 186
Does Curriculum Allow Students to Major or Minor in Transportation: No
Number of Graduate Students in Transportation: 4 Full-time, 3 Part-time

Report Prepared by:

Mohiuddin Imran

Report Submitted by:

Mohiuddin Imran
Phone: (618)-334-1180
E-mail: mimran@siue.edu

Content Approved by:

Dr. Yan Qi, Ph. D., P.E.
Assistant Professor

Table of Contents

Objectives	2
Summary of The Student Chapter Activities.....	3
Meetings and Networking Events	4
Meetings, Conferences and Summits.....	6
Transportation Research Board’s 97th Annual Meeting.....	7
Competitions and Networking	8
Activities: Engineering Open House Fall 2017	9
Activities: Student Organization Activities Fair.....	10
School of Engineering Annual Banquet.....	10
ITE Student Chapter on the Web.....	11
Publications	12
Student Chapter Roaster	13

Objectives

The SIUE ITE student chapter has been dedicated to connecting the students of transportation engineers in the area. The Southern Illinois University Edwardsville student chapter usually holds two to five meetings every semester. Engineers from the industrial field and state government together with professors from other universities are invited to give presentations on the planning, design, operation and maintenance of the transportation system. The meetings give students a chance to understand what jobs transportation engineers work on, while they are still in a learning environment. Both graduate and undergraduate students are members of the student chapter who get benefited from attending the professional meetings which give them the opportunity to networking with the industry leaders as well as professional engineers, academia etc.



Fig: Members of the SIUE ITE Student Chapter at SLU Traffic Bowl

Summary of The Student Chapter Activities

In 2017, the SIUE Student Chapter enjoyed its tenth full calendar year as a part of ITE (Institute of Transportation Engineers) since reactivation in September 2007. The Chapter maintained official recognition from the University as a registered student organization. In addition, new members were recruited, making it one of the largest Civil Engineering clubs on campus by enrollment. Officials from the Illinois Department of Transportation (IDOT), Missouri Department of Transportation (MoDOT), and several private firms have been invited to the chapter meetings.

During this year, the students from Transportation Engineers have shown outstanding performance in their research and their exemplary works have been presented in 2018 Transportation Research Board's (TRB) Annual Meeting which was held during January 7-11, 2018 in Washington, D.C. More than five student papers have been published in their annual journal.

The students of this chapter have also joined the Fifth Annual St. Louis Collegiate Traffic Bowl which was held at St. Louis University on February 23, 2018 and has shown outstanding performance.

Furthermore, the ITE Student Chapter, SIUE has plans to join the 2018 Midwestern District ITE Annual Conference and the 2018 Midwestern/Great Lakes Student Leadership Summit which will be held in Minneapolis, Minnesota during August.



Fig: Student Chapter Meetings

Meetings and Networking Events

SIUE ITE student chapter has been arranging a number of regular meetings not only for the members in Transportation Engineering, but also for the students in general. This has been proved to be a great platform for the students to communicate with the industry leaders and showcase their academic excellence which helps them to get real life industry experience. The chapter has arranged a number of meetings in the previous year which are listed below:

- ✓ February 15, 2017
 - ITE Student Day meeting at Chicago

- ✓ April 3, 2017
 - Guest Speaker: Erica Fuesting and Mike Dolde
 - Affiliation: CBB Transportation Engineers and Planners
 - Speech Topic: **ITS Tasks for the Paige Avenue Extension, Phase 3**
 - Discussion on 2017 ITE Midwestern District Conference

- ✓ April 24, 2017
 - Guest Speaker: Matthew Letourneau, P.E. PTOE
 - Affiliation: AECOM
 - Speech Topic: **ITS Related Projects**

- ✓ August 30, 2017
 - Officers' Election for the 2017-2018 calendar year
 - Revising rules and regulations for the organization

- ✓ September 15-17
 - Participating in ITE Midwest/Great Lakes District Student Leadership Summit 2017 at Purdue University, Lyles School of Civil Engineering

- ✓ November 8, 2017
 - Guest Speaker: Jeanne M. Olubogun
 - Affiliation: Missouri Department of Transportation (MoDOT)
 - Speech Topic: **Missouri Department of Transportation Traffic Operations**

- ✓ November 11, 2017
 - Participating in the School of Engineering Open House

- ✓ February 22, 2018
 - Participating in Annual Banquet organized by the School of Engineering, SIUE

- ✓ February 23, 2018
 - Participating in the Fifth Annual St. Louis Collegiate Traffic Bowl organized by TEAM STL at St. Louis University



Fig: ITE Midwest/Great Lakes District Student Leadership Summit 2017 at Purdue University, Lyles School of Civil Engineering

Meetings, Conferences and Summits

During the last year, a number of officials from the Illinois Department of Transportation (IDOT), Missouri Department of Transportation (MoDOT), and several private consultancy firms have been invited to the chapter meetings. The Following picture shows the typical view of a meeting session where Mrs. Jeanne M. Olubogun, District Traffic Engineer of Missouri Department of Transportation, shared her work experience on MoDOT's transportation and traffic operations. The next two meetings are scheduled on Mid-March and Mid-April where officials from the Lochmueller group and Oates Associates will be delivering their speeches on Intelligent Transportation Systems and Transportation Safety Engineering.



Fig: Jeanne M. Olubogun's speech on MoDOT's transportation and traffic operations at ITE student chapter, SIUE's meeting.

Transportation Research Board's 97th Annual Meeting

SIUE's Department of Civil Engineering students are highly involved in individual and professional researches funded by IDOT and other agencies. Their works are periodically showcased in major events involving transportation engineering. This year's 97th Annual Meeting was held on January 7–11, 2018, at the Walter E. Washington Convention Center, in Washington, D.C. where more than 13,000 transportation engineering professionals from all over the world has attended and published their extemporary works. Former ITE Presidents Md. Atiqzaman and Md. Abdur Rab along with another member Mr. Tousehik Hasan Niloy has participated along with ITE advisor Dr. Yan Qi and Dr. Ryan Fries from the Department of Civil Engineering on this year's annual meeting and presented their research. Their research topics included current practices in pedestrian treatments at uncontrolled intersections in Illinois and accuracy measurement of real time construction information dissemination to travelers.



Fig: Participation in TRB's 97th Annual Meeting

Competitions and Networking

The chapter students have attended the 5th Annual St. Louis Collegiate Traffic Bowl Scrimmage and Networking Event organized by TEAM STL (Transportation Engineers' Association of Metropolitan St. Louis) at St. Louis University. This was a family friendly event for civil engineering professions and students. A number of students from Washington University in St. Louis, University of Missouri, St. Louis, St. Louis University and Southern Illinois University Edwardsville (SIUE) has attended the traffic bowl. members from SIUE ITE Student chapter had shown great promise and won a number of prizes. It was a great event to network with other students and professions from the region.



Fig: 5th Annual St. Louis Collegiate Traffic Bowl Scrimmage and Networking Event

Activities: Engineering Open House Fall 2017

The student chapter members introduced the traffic signal and driver simulator to the visitors in the Engineering College open house in Fall 2017. This was done in an attempt to attract more Transportation oriented students and potential ITE members to SIUE. The visitors were also introduced briefly about ITE and ITE newsletter was handed out to them. The ITE also plan to help with the 2018 open house.

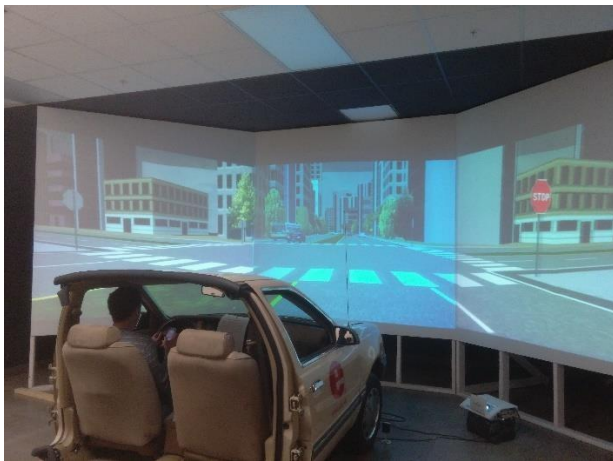


Fig: Fall, 2017 Open House at SIUE School of Engineering

Activities: Student Organization Activities Fair

To explain the responsibilities and duties of a transportation engineer and activities of ITE student chapter to the new undergraduate and graduate students, our chapter officers participated on the Spring 2018 “Student Organization Activities Fair” organized by SIUE on January 25, 2018. The responses from the new students were amazing.

School of Engineering Annual Banquet

Student chapter President Mohiuddin Imran and Secretary Pranesh Biswas represented ITE at the annual banquet and award giving ceremony organized by the School of Engineering, SIUE on February 23, 2018. The dean of school of engineering recognized ITE along with other student chapter for their continuous activities in the campus.



Fig: SIUE School of Engineering Annual Banquet

ITE Student Chapter on the Web

ITE Student Chapter has an official website (<http://www.ce.siuue.edu/ite/index.asp>). Students can check on meeting times and speakers and contact officers from this website. The website also provides students with news and links to other web sites including National ITE, IL section of ITE, MO Valley Section of ITE, and Transpiration Engineering Association of St. Louis. ITE Student Chapter is also a registered student organization on-campus approved by the student government at SIUE. The link to registered student organization webpage is <https://siue.collegiatelink.net/organization/ite>.

Institute of Transportation Engineers

CONTACT

ITE Student Chapter at SIUE provides a platform for exposure of Transportation Engineering student's to real-life problems, as it invites transportation professionals to talk with the students. This organization also encourages SIUE students to participate in different types of student activities (e.g. Traffic Bowl, Poster Competition).

Contact Information

209 Anthony dr.
Apt-A
Maryville, IL 62062
United States
E: mimran@siue.edu
P: (618) 334-1180

Officers

Y ADVISER Yan Qi	Mohiuddin Imran PRESIDENT	P SECRETARY Pranesh Biswas	S TREASURER Sima Moradi Bajestani
-------------------------------	-------------------------------------	---	--

Institute of Transportation Engineers Student Chapter

SIUE Civil Engineering Department

Links

- National ITE
- IL Section ITE
- MO Valley Section ITE
- Transportation Engineering Association of Saint Louis

Other

- SIUE ITE News
- Officer Login

Welcome to the SIUE - Institute of Transportation Engineers Student Chapter

Civil Engineering Homepage >> ITE

Please note that this page is under construction.

About Us

The ITE student chapter at Southern Illinois University Edwardsville was started in 2006. Currently there are 130 chapters around the world. The goal of ITE at SIUE is to introduce students to the transportation profession by putting them in contact with working transportation engineers. Attending ITE meetings will expose students to real world applications of transportation engineering. The objectives of the Institute of Transportation Engineers student chapter at SIUE, as set forth by the Student Chapter Charter (ITE.org), are to:

- Promote the advancement of transportation and traffic engineering profession by fostering the close association of students with the profession and ITE;
- Acquaint students with topics of interest in transportation and traffic engineering through competent speakers and chapter-sponsored trips;>
- Foster the development of professional spirit;
- Promote common interests among students; and
- Encourage the expansion of facilities for transportation and traffic engineering study.

Becoming a member of the ITE will give you contacts for employment, better your understanding of material learned in class, give you an opportunity to interact with other student and staff, and strengthen your networking skills.

News

ITE Welcomes Sjogren and Disney-Haufe from Illinois Institute of Transportation Engineers ...more

SIUE ITE Chapter Takes 4th place in Traffic Bowl...more

ITE Welcomes Sjogren and Disney-Haufe from Illinois Institute of Transportation Engineers ...more

Fig: ITE Student Chapter, SIUE on Web

Publications

- 1. Exploring Distracted Driver Detection Algorithms Using Driving Simulator Study**
Authors: Ryan N Fries, Yan Qi, M. Atiquzzaman
- 2. Factors Contributing to Injury Severity of Pedestrian Crashes at Uncontrolled Locations in Illinois**
Authors: Yan Qi, Huaguo H Zhou, Mahdi Rouholamin, Raghunandan Baireddy
- 3. How Many Times Should I Run the Model? Performance Measure Specific Findings from Vissim Models in Missouri**
Authors: Shawn J Leight, Yan Qi, Ryan N Fries
- 4. Safety Evaluation of Diverging Diamond Interchanges Design for Intersections in Minnesota**
Authors: JacquelineWalls, Md Rab, YanQi, RyanFries
- 5. Comparison of Contributing Factors to Pedestrian Crossing Crash Severity at Locations with Different Controls in Illinois**
Authors: Md Rab, Yan Qi, Ryan Fries

Student Chapter Roaster

Sl. No.	Name	E-mail	Degree
1	Nedal Nijmeh	nnijmeh@siue.edu	Bachelors
2	Caleb Mau	cmau@siue.edu	Bachelors
3	Ryan Stepping	rsteppi@siue.edu	Bachelors
4	David Molohon	dmoloho@siue.edu	Bachelors
5	Robert Hodgson	rhodgso@siue.edu	Bachelors
6	Matt Bay	mabay@siue.edu	Bachelors
7	Evan Stutz	estutz@siue.edu	Bachelors
8	Sam England	senglan@siue.edu	Bachelors
9	Jacob Kampwerth	jkampe@siue.edu	Bachelors
10	Kurtis Weber	kuweber@siue.edu	Bachelors
11	Priscilla de Andrade	pdeandr@siue.edu	Bachelors
12	Andrew Burkhardt	aburkha@siue.edu	Bachelors
13	Seth Bowers	sbowers@siue.edu	Bachelors
14	Jordan Finley	jofinle@siue.edu	Bachelors
15	Jason Rehg	jarehg@siue.edu	Bachelors
16	Nathan Stock	nstock@siue.edu	Bachelors
17	Krishna G Akkaram	kakkara@siue.edu	Masters
18	Vedavyas Koppula	vkoppul@siue.edu	Masters
19	Nick Moore	nmoore@siue.edu	Bachelors
20	Marisol Ramos	mramos@siue.edu	Bachelors

Sl. No.	Name	E-mail	Degree
21	Sarah Turner	saturne@siue.edu	Bachelors
22	Ehren Kirby	ehkirby@siue.edu	Bachelors
23	Talal Rehan	talalrehan@yahoo.com	Masters
24	Robert Seitzwiger	rseitzi@siue.edu	Masters
25	Antoun Fadoul	afadoul@siue.edu	Masters
26	Robby Miles	rmiles@siue.edu	Bachelors
27	Steven Goodpaster	sgoodpa@siue.edu	Bachelors
28	Md Atiquzzaman	matiquz@siue.edu	Masters
29	Corey Schaufelberger	cschauf@siue.edu	Bachelors
30	Abass Jumoke	jabass@siue.edu	Masters
31	Amy Kurich	akurich@siue.edu	Bachelors
32	Sofia Chkawtouich	schkaut@siue.edu	Bachelors
33	Amanda Fisher	amfishe@siue.edu	Bachelors
34	Matthew Eck	maeck@siue.edu	Bachelors
35	Sima Moradi	simorad@siue.edu	Masters
36	Md Abdur Rab	mrab@siue.edu	Masters
37	Tim Waldvogel	twaldvo@siue.edu	Bachelors
39	Hasan Abuhzaima	habuhza@siue.edu	Bachelors
40	Jennifer Jones	jennijo@siue.edu	Bachelors
41	Mohammed Altowa	maltowa@siue.edu	Bachelors
42	Parham Safarian Bahri	psafari@siue.edu	Masters
43	Praveen Kumar Mandava	pmandav@siue.edu	Masters
44	Md Toushik Ahmed	mniloy@siue.edu	Masters
45	Mohiuddin Imran (P)	mimran@siue.edu	Masters
46	Pranesh Biswas (S)	pbiswas@siue.edu	Masters
47	Obaidur Rahman (VP)	uobaidu@siue.edu	Masters
48	Reza Salehi (T)	rsalehi@siue.edu	Masters